

EPISODE #2016 DAZED AND DRYWALLED

Safety first!

When installing insulation, cover up! We also suggest wearing a respirator mask (see Tool of the Day). (fig. A)

Basic Steps to Consider:

Install insulation

You don't want to bring the insulation to the floor, in case there is a flood. Pack insulation loosely. (fig. B)

Install vapour barrier

vapour barrier keeps moisture from entering your walls and causing condensation. Condensation in your wall is bad. Purchase UV protection vapour barrier which may cost a bit more, but won't deteriorate. (fig. C)

- Overlap the vapour barrier on studs and seams and staple into the studs. To cut around outlets or vents, cut an X where the obstruction is and push through, then seal with vapour barrier tape. (fig. D)

Install drywall

- Keep at least .5" above floor in case of flood. You don't want to screw through the paper, just dimple it ever so slightly. (fig. E)
- To cut around your outlets, measure and cut using a drywall cutout tool (see Tool of the Day) or dry wall knife. (fig. F)
- We suggest you do not attempt the lipstick method as prescribed by Leigh.

Taping and Finishing

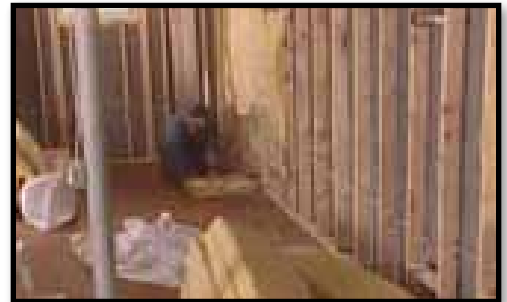
Tools: mudhawk, various sizes of trowels for compound application.

*Tip – We used a quick dry 45 minute drywall compound. Regular compounds take 24 hours to dry. If you do use the quick dry compound, pre mix in small batches so it doesn't dry in your bucket. (fig. G)

- Tape along the seams. You will want to put a layer of mud on the seams first, then tape. (fig. H)
- Apply drywall compound over the seams. You will need to apply this compound in 3 layers, drying in between. The third coat is a very thin application. Don't forget to fill in the screw holes too. (fig. I)



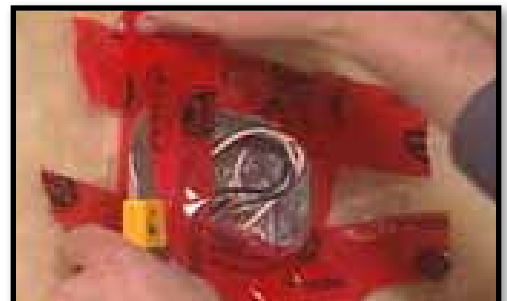
A. Always cover up.



B. Packing insulation..



C. Installing a vapour barrier



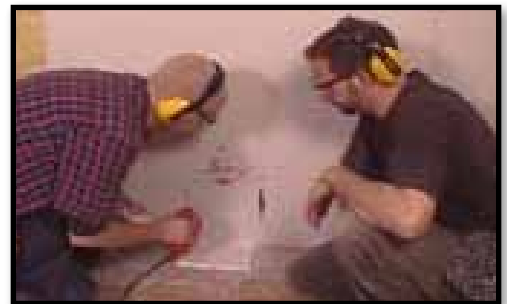
D. Seat the vapour barrier with tape.

EPISODE #2016 DAZED AND DRYWALLED

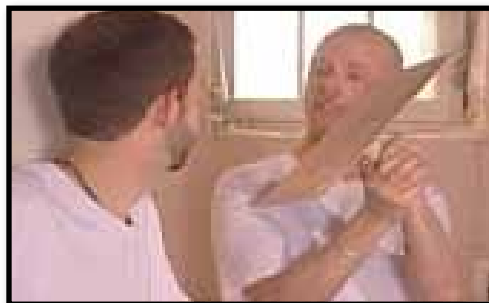
- Corner beads – you can purchase corner beads with metal strips which makes a nice clean corner (fig. J)
- Sand for smooth surface, especially if you are painting or wallpapering.



E. Leave enough room for floods.



F. The drywall tool for outlets.



G. The mudhawk tool.



H. Put a layer of mud on the seems



I. Apply drywall compound over the seams.



J. Metal corner seams.